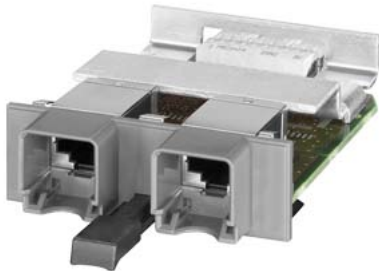


product description

XR-300 media module

SCALANCE X accessory; Media module MM992-2CUC; 2x 10/100/1000 Mbit/s RJ45 ports, electrical; with securing collar



interfaces	
number of electrical/optical connections / for network components or terminal equipment / maximum	2
number of electrical connections <ul style="list-style-type: none"> <li>for network components or terminal equipment / maximum</li> </ul>	2
number of 10/100/1000 Mbit/s RJ45 ports	2
type of electrical connection <ul style="list-style-type: none"> <li>for network components or terminal equipment</li> </ul>	RJ45
ambient conditions	
ambient temperature <ul style="list-style-type: none"> <li>during operation</li> <li>during storage</li> <li>during transport</li> </ul>	-40 ... +70 °C -40 ... +85 °C -40 ... +85 °C
relative humidity / at 25 °C / without condensation / during operation / maximum	95 %
protection class IP	IP20
design, dimensions and weights	
design	Media module with retaining collar
width	60 mm
height	22 mm
depth	100 mm
net weight	0.08 kg
fastening method <ul style="list-style-type: none"> <li>installation in media module slot</li> </ul>	latched Yes
standards, specifications, approvals	
standard <ul style="list-style-type: none"> <li>for FM</li> <li>for hazardous zone</li> <li>for safety / from CSA and UL</li> <li>for hazardous zone / from CSA and UL</li> <li>for emitted interference</li> <li>for interference immunity</li> </ul>	FM3611: Class 1, Division 2, Group A, B, C, D / T4, Class 1, Zone 2, Group IIC, T4 EN 60079-0: 2006, EN60079-15: 2005, II 3 G Ex nA II T4, KEMA 07 ATEX 0145 X UL 60950-1, CSA C22.2 No. 60950-1 UL 1604 and UL 2279-15 (Hazardous Location), CSA C22.2 No. 213-M1987, Class 1 / Division 2 / Group A, B, C, D / T4, Class 1 / Zone 2 / Group IIC / T4 EN 61000-6-4:2007 (Class A) EN 61000-6-2:2005
certificate of suitability <ul style="list-style-type: none"> <li>CE marking</li> <li>C-Tick</li> </ul>	EN 61000-6-2:2005, EN 61000-6-4:2007 Yes Yes

<ul style="list-style-type: none"> <li>• KC approval</li> </ul>	Yes
<ul style="list-style-type: none"> <li>• CCC / for hazardous zone according to GB standard</li> </ul>	Yes
Marine classification association	
<ul style="list-style-type: none"> <li>• French marine classification society (BV)</li> </ul>	Yes
MTBF	250 y

#### further information / internet-Links

Internet-Link	
<ul style="list-style-type: none"> <li>• to web page: selection aid TIA Selection Tool</li> <li>• to website: Industrial communication</li> <li>• to website: Industry Mall</li> <li>• to website: Information and Download Center</li> <li>• to website: Image database</li> <li>• to website: CAX-Download-Manager</li> <li>• to website: Industry Online Support</li> </ul>	<a href="http://www.siemens.com/tia-selection-tool">http://www.siemens.com/tia-selection-tool</a> <a href="http://www.siemens.com/simatic-net">http://www.siemens.com/simatic-net</a> <a href="https://mall.industry.siemens.com">https://mall.industry.siemens.com</a> <a href="http://www.siemens.com/industry/infocenter">http://www.siemens.com/industry/infocenter</a> <a href="http://automation.siemens.com/bilddb">http://automation.siemens.com/bilddb</a> <a href="http://www.siemens.com/cax">http://www.siemens.com/cax</a> <a href="https://support.industry.siemens.com">https://support.industry.siemens.com</a>

**last modified:** 6/25/2021 