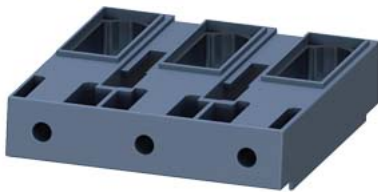





Box terminal for contactor 3RT1, 3RB2 Size S6 max. connection approx. 120 mm²





product brand name	SIRIUS
product designation	Box terminal block
design of the product	up to 120 mm ² , can be used for 3UF71.3-1BA00-0 or 3RW443.
Substance Prohibittance (Date)	01.07.2006

Certificates/ approvals

General Product Approval	EMC	Declaration of Conformity
 Confirmation		
		

Declaration of Conformity	Test Certificates	Marine / Shipping
UK Declaration of Conformity	Type Test Certificates/Test Report	Special Test Certificate
		
		

Marine / Shipping	other	Railway
		Confirmation
		Miscellaneous
		Special Test Certificate

Further information

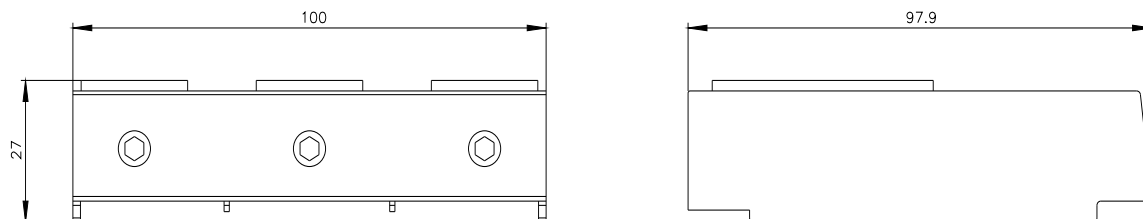
- Information- and Downloadcenter (Catalogs, Brochures,...)
<https://www.siemens.com/ic10>
- Industry Mall (Online ordering system)
<https://mall.industry.siemens.com/mall/en/en/Catalog/product?mlfb=3RT1956-4G>
- Cax online generator
<http://support.automation.siemens.com/WW/CAXorder/default.aspx?lang=en&mlfb=3RT1956-4G>
- Service&Support (Manuals, Certificates, Characteristics, FAQs,...)
<https://support.industry.siemens.com/cs/ww/en/ps/3RT1956-4G>
- Image database (product images, 2D dimension drawings, 3D models, device circuit diagrams, EPLAN macros, ...)
http://www.automation.siemens.com/bilddb/cax_de.aspx?mlfb=3RT1956-4G&lang=en

Characteristic: Tripping characteristics, I²t, Let-through current

<https://support.industry.siemens.com/cs/ww/en/ps/3RT1956-4G/char>

Further characteristics (e.g. electrical endurance, switching frequency)

<http://www.automation.siemens.com/bilddb/index.aspx?view=Search&mlfb=3RT1956-4G&objecttype=14&gridview=view1>



last modified:

1/18/2021 