



door mounted rotary operator emergency-off NEMA type 1, 3R, 12,4/4X with door interlock and door open position accessory for: 3VA4/5 125

| Model                            |   |
|----------------------------------|---|
| product brand name               | SENTRON                                   |
| product designation              | Accessories                               |
| Product version                  | Door-coupling rotary operating mechanism  |
| Accessories                      | Door-coupling rotary operating mechanisms |
| General technical data           |   |
| degree of protection NEMA rating | NEMA 1, 3R, 12, 4, 4X                     |
| protection class IP              | IP65                                      |
| Mechanical Design                |   |
| Height                           | 70 mm                                     |
| Width                            | 77 mm                                     |
| net weight                       | 562 g                                     |
| Further information              |   |

Information- and Downloadcenter (Catalogs, Brochures,...)

<http://www.siemens.com/lowvoltage/catalogs>

Industry Mall (Online ordering system)

<https://mall.industry.siemens.com/mall/en/en/Catalog/product?mlfb=3VA9137-0FK35>

Service&Support (Manuals, Certificates, Characteristics, FAQs,...)

<https://support.industry.siemens.com/cs/ww/en/ps/3VA9137-0FK35>

Image database (product images, 2D dimension drawings, 3D models, device circuit diagrams, ...)

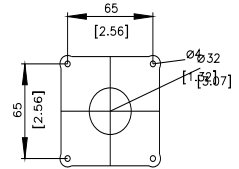
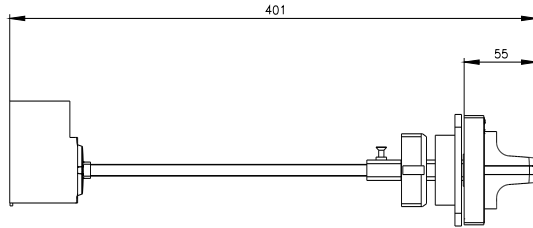
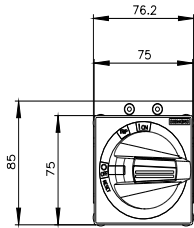
[http://www.automation.siemens.com/bilddb/cax\\_en.aspx?mlfb=3VA9137-0FK35](http://www.automation.siemens.com/bilddb/cax_en.aspx?mlfb=3VA9137-0FK35)

CAX-Online-Generator

<http://www.siemens.com/cax>

Tender specifications

<http://www.siemens.com/specifications>



last modified:

12/20/2020 

