



Washer for EMERGENCY STOP, yellow, without inscription, Outer diameter 75 mm, Inside diameter 22.5 mm, Thickness 2 mm

product brand name	SIRIUS ACT	
product designation	EMERGENCY STOP plate	
product type designation	3SU1	
General technical data		
shock resistance for railway applications acc. to DIN EN 61373	Category 1, Class B	
vibration resistance for railway applications acc. to DIN EN 61373	Category 1, Class B	
Substance Prohibition (Date)	01.10.2014	
Accessories		
material of accessory	Plastic	
fastening method of label	without	
marking of backing plate	none	
shape of backing plate	Round	
color of backing plate	yellow (plate); black (text)	
product function illuminated backing plate	No	
Certificates/ approvals		
General Product Approval	Declaration of Conformity	Test Certificates



[UK Declaration of Conformity](#)

[Special Test Certificate](#)

Test Certificates	Marine / Shipping
-------------------	-------------------

[Type Test Certificates/Test Report](#)



other

[Confirmation](#)

Further information

Information- and Downloadcenter (Catalogs, Brochures,...)

<https://www.siemens.com/ic10>

Industry Mall (Online ordering system)

<https://mall.industry.siemens.com/mall/en/en/Catalog/product?mfb=3SU1900-0BB31-0AA0>

Cax online generator

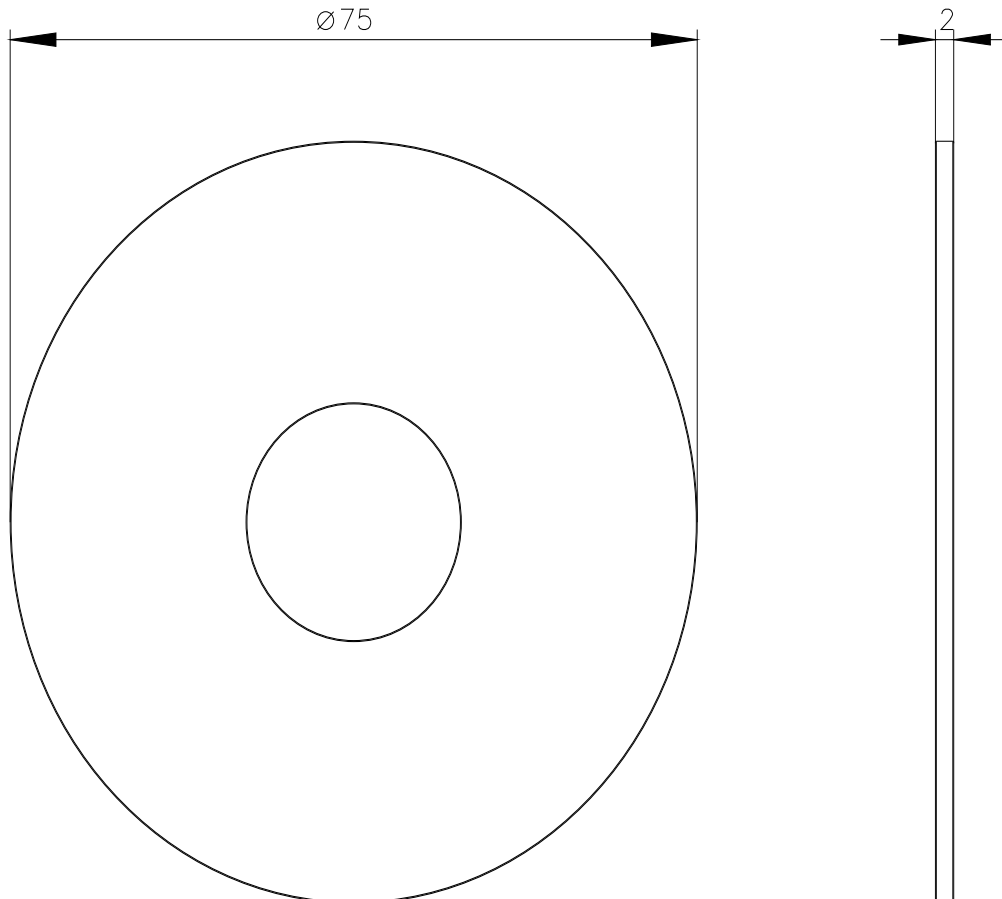
<http://support.automation.siemens.com/WW/CAXorder/default.aspx?lang=en&mfb=3SU1900-0BB31-0AA0>

Service&Support (Manuals, Certificates, Characteristics, FAQs,...)

<https://support.industry.siemens.com/cs/ww/en/ps/3SU1900-0BB31-0AA0>

Image database (product images, 2D dimension drawings, 3D models, device circuit diagrams, EPLAN macros, ...)

http://www.automation.siemens.com/bilddb/cax_de.aspx?mfb=3SU1900-0BB31-0AA0&lang=en



last modified:

8/10/2021 