

Socket - EM-DUO/120/15/GFI - 5600462

Please be informed that the data shown in this PDF Document is generated from our Online Catalog. Please find the complete data in the user's documentation. Our General Terms of Use for Downloads are valid (<http://download.phoenixcontact.com>)




Rail-mountable double socket with integrated fault current circuit breaker, for mounting on 35 mm DIN rails in acc. with EN 60715, housing color: White, with screw connection, national version: USA

Figure shows the variant 5600461
EM-DUO 120/15



Key commercial data

Packing unit	1 PCE
Minimum order quantity	300 PCE
Catalog page	Page 633 (IF-2011)
GTIN	 4 046356 139526
Custom tariff number	85366990
Country of origin	CHINA

Technical data

General data

Nominal voltage U_N	120 V AC
Nominal current I_N	15 A
Contact material	CuZn37
For country-specific use in	USA
Color	white
Insulating material	PVC 94 V0
Ambient temperature (operation)	-40 °C ... 70 °C
Ambient temperature (storage/transport)	-40 °C ... 70 °C

Socket - EM-DUO/120/15/GFI - 5600462

Technical data

General data

Standards/regulations	UL 508
Width	83 mm
Height	134 mm
Depth	52 mm

Connection data

Conductor cross section solid min.	0.2 mm ²
Conductor cross section solid max.	6 mm ²
Conductor cross section stranded min.	0.2 mm ²
Conductor cross section stranded max.	4 mm ²
Conductor cross section AWG/kcmil min.	24
Conductor cross section AWG/kcmil max	10
Connection method	Screw connection
Stripping length	8 mm
Screw thread	M3

Classifications

ETIM

ETIM 2.0	EC001325
ETIM 3.0	EC001325
ETIM 4.0	EC001325
ETIM 5.0	EC001325

UNSPSC

UNSPSC 11	39121406
UNSPSC 12.01	39121406
UNSPSC 13.2	39121406
UNSPSC 6.01	30211806
UNSPSC 7.0901	39121406

eCl@ss

eCl@ss 4.0	27142305
eCl@ss 4.1	27142305
eCl@ss 5.0	27143412
eCl@ss 5.1	27143412
eCl@ss 6.0	27143412
eCl@ss 7.0	27440519

Socket - EM-DUO/120/15/GFI - 5600462

Approvals

Approvals


Approvals


UL Listed / cUL Listed / cULus Listed


Ex Approvals

Approvals submitted

Approval details

UL Listed 	
mm ² /AWG/kcmil	30-10
Nominal current I _N	15 A
Nominal voltage U _N	125 V

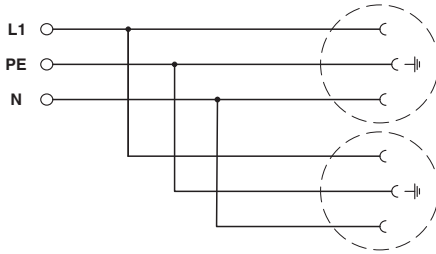
cUL Listed 	
mm ² /AWG/kcmil	30-10
Nominal current I _N	15 A
Nominal voltage U _N	125 V

cULus Listed 	
--	--

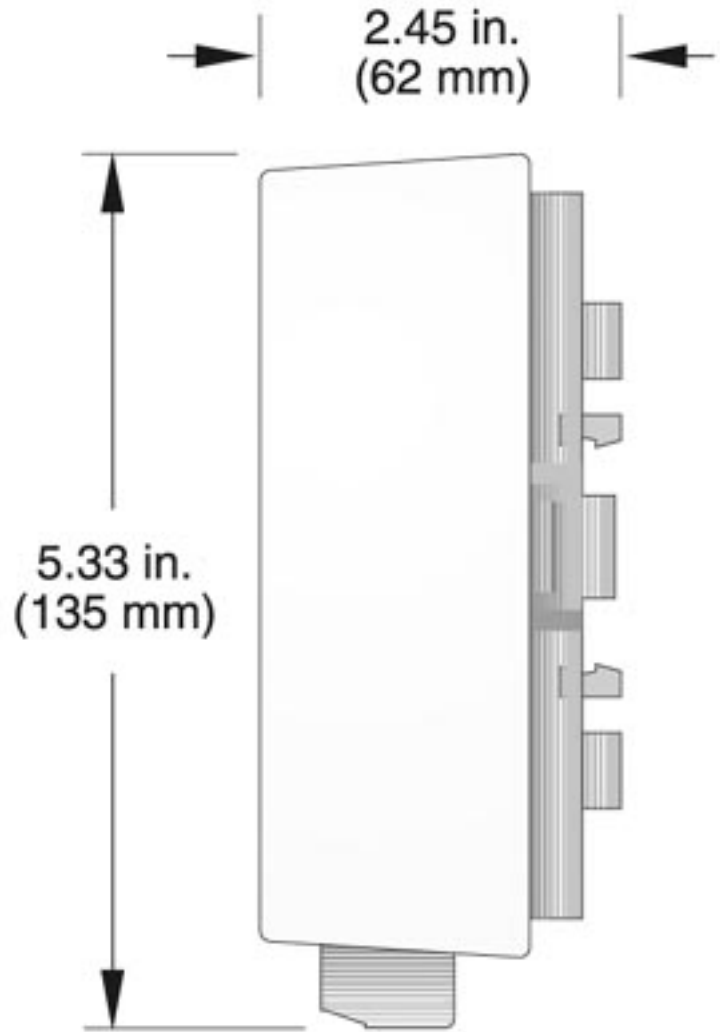
Drawings

Socket - EM-DUO/120/15/GFI - 5600462

Circuit diagram



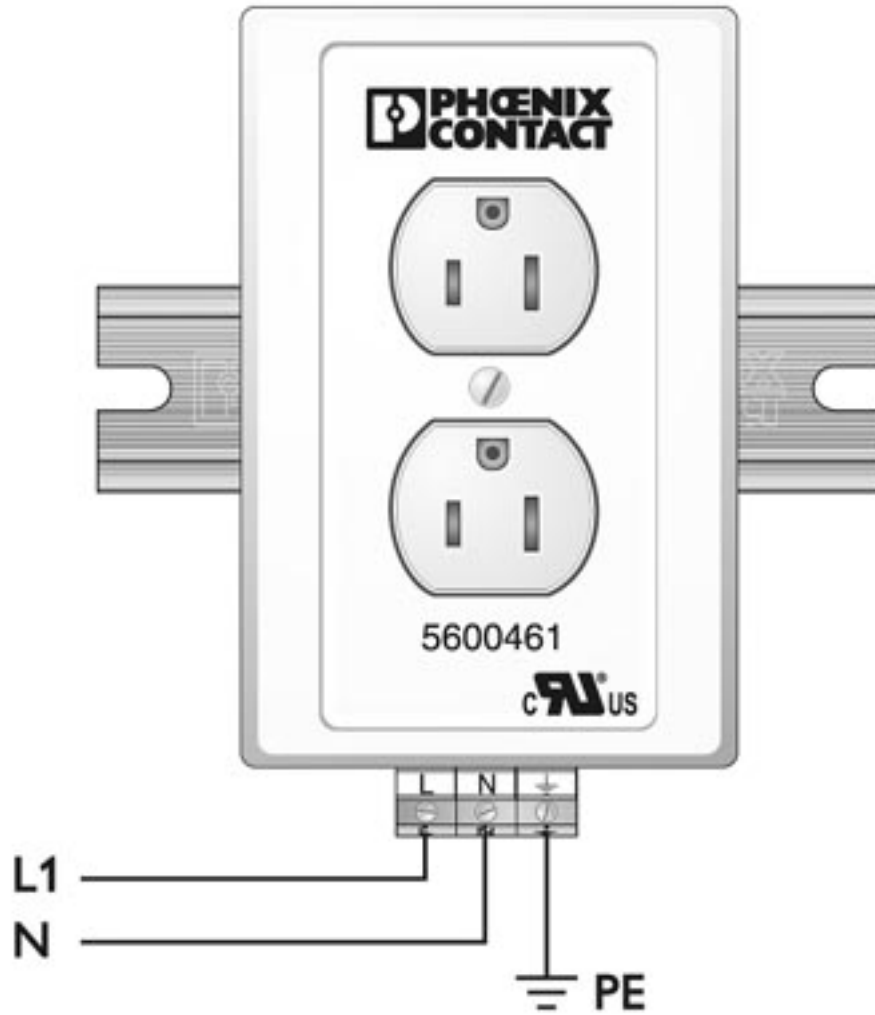
Dimensioned drawing



Side view

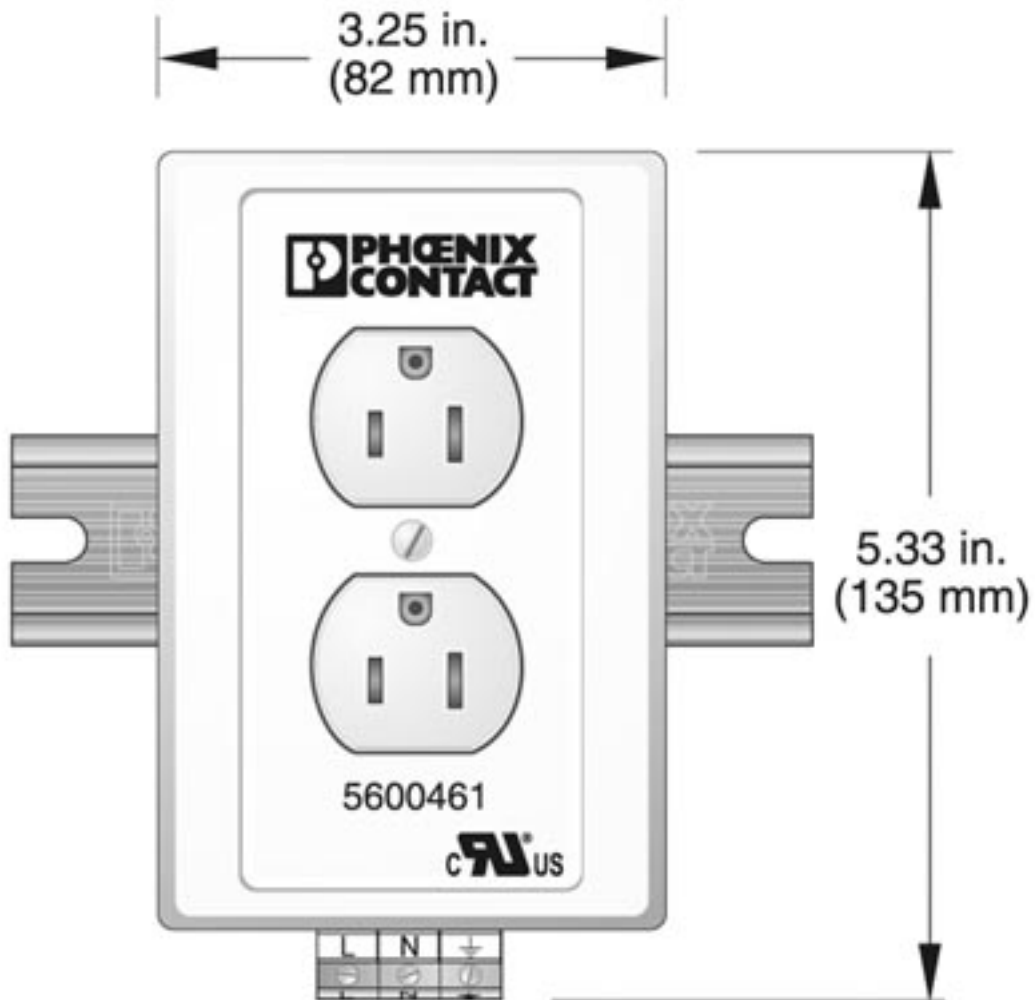
Socket - EM-DUO/120/15/GFI - 5600462

Connection diagram



Socket - EM-DUO/120/15/GFI - 5600462

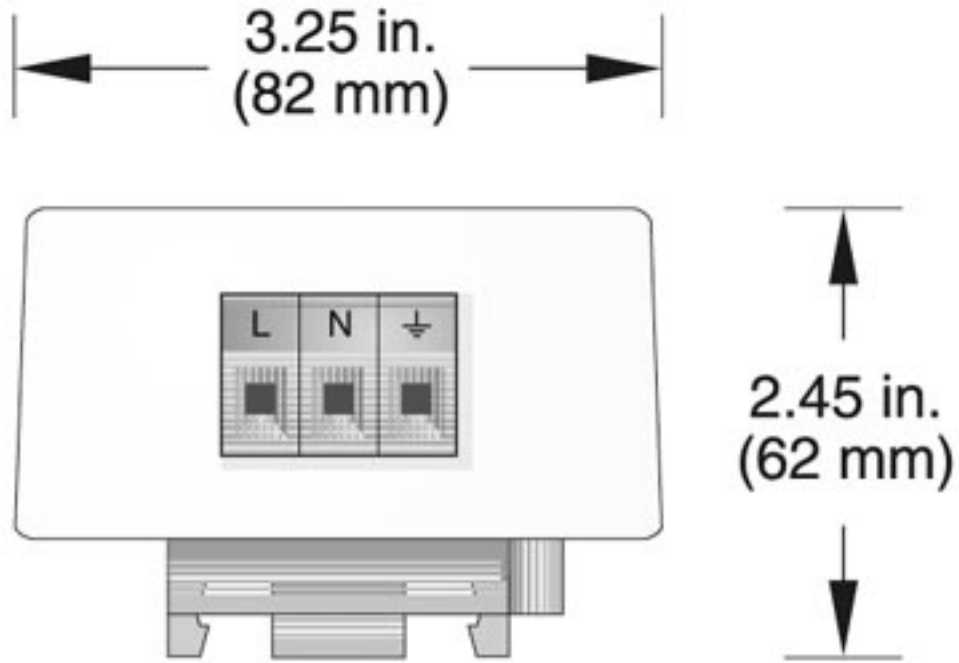
Dimensioned drawing



Front view

Socket - EM-DUO/120/15/GFI - 5600462

Dimensioned drawing



Bottom view