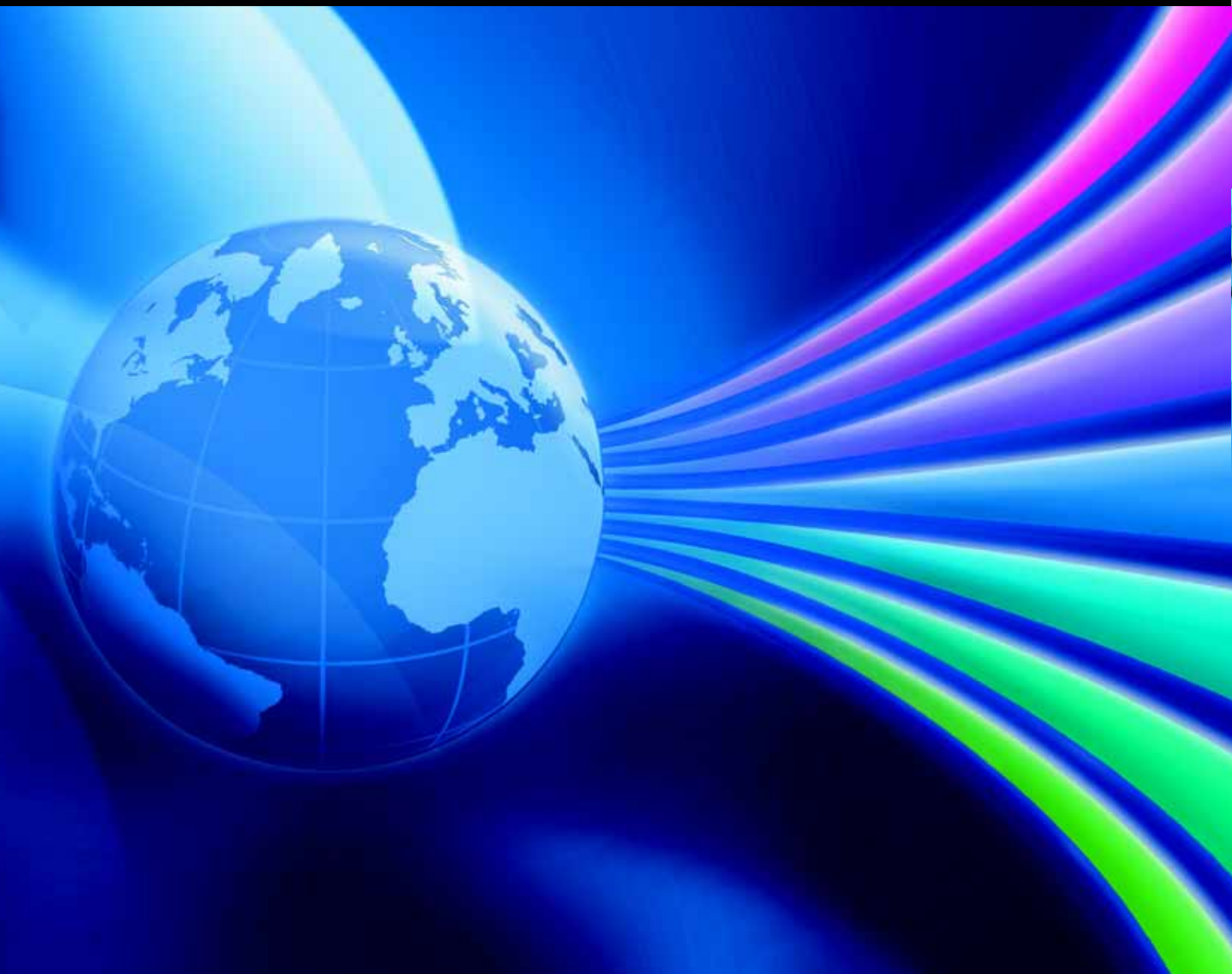
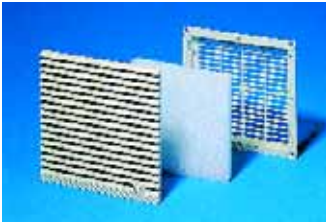


## Catalogue 32



**Global = Faster, better, more efficient.**



### Outlet filter

For ventilation by convection, an outlet filter can be installed in the upper and lower sections of the enclosure.

**Material:**  
ABS,  
material resistance to UL 94-V0.

**Colour:**  
RAL 7035

**Supply includes:**  
Outlet filter including filter mat.



Dimensions in mm	Model No. SK
116.5 x 22	<b>3321.207</b>
148.5 x 24.5	<b>3322.207</b>
204 x 30	<b>3323.207</b>
255 x 30	<b>3325.207</b>
323 x 30	<b>3326.207</b>

For RAL 7032, use order extension .200.

**Note:**  
EMC version,  
see page 694.

**+** **Accessories:**

Spare filter mats,  
see page 725.  
Fine filter mats,  
see page 725.



### Hose-proof hoods

#### for fan-and-filter units/outlet filters

When the hose-proof hood is mounted above the fan-and-filter unit and outlet filter in conjunction with a fine filter mat, a protection category of IP 56 to EN 60 529/09.2000 is achieved.

**Material:**  
Stainless steel

**Protection category:**  
In conjunction with the fan-and-filter units/outlet filters, NEMA 3R + 12 is met.



For	Dimensions in mm	Model No. SK
SK 3321. . . .	150 x 260 x 40	<b>3321.800<sup>1)</sup></b>
SK 3322. . . .	176 x 270 x 55	<b>3322.800</b>
SK 3323. . . .	233 x 410 x 55	<b>3323.800</b>
SK 3324. . . .	282 x 500 x 85	<b>3324.800</b>
SK 3325. . . .		
SK 3326. . . .	350 x 560 x 110	<b>3326.800</b>
SK 3327. . . .		

<sup>1)</sup> Delivery times available on request.



### Front outlet grille 2 U

#### for centrifugal fans

This front outlet grille is required if a 482.6 mm (19") cross-flow blower (SK 3144.000/ SK 3145.000) is used in the lower section of the electronic enclosure and the hot air is to be expelled to the outside from the upper section of the enclosure.

The design of the grille matches that of the intake grille in the cross-flow blower.

These grilles can also be used as simple inflow and outflow grilles with natural convection.

Packs of	Model No. SK
1	<b>3176.000</b>

**+** **Accessories:**

Filter mat,  
see page 723.