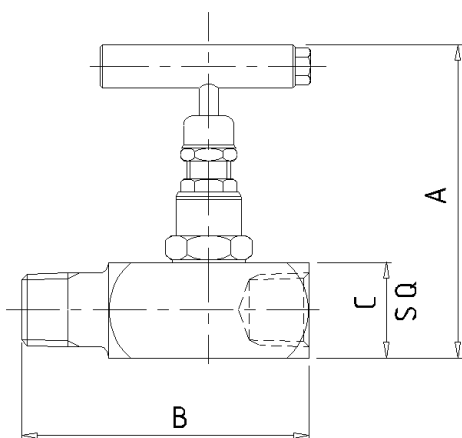




Product Data Sheet

M Type Needle Valve



The 'M' Type Single Isolating Needle Valve is designed for safe and reliable isolation giving bubble tight shut off, non-rotating & anti-galling tip and dynamic self-adjusting spindle seal to give long service life in a variety of applications.

Part No.	Connections Size	A	B	C	Weight (Kgs)
M25	1/4"	3.6	2.1	1.1	0.5
M38	3/8"	3.6	2.4	1.1	0.5
M50	1/2"	3.6	2.6	1.1	0.5
M75	3/4"	3.6	2.9	1.5	0.8
M10	1"	3.6	3.2	2.0	1.4

Key Features of the Oliver Needle Valve range

- Non rotating tip - self centering & anti-galling
- Piston ring - gives dynamic adjustment of gland seal in response to pressure change
- Anti-blow out spindle - a major safety feature
- Secure seal - precision machined to give leak free operation for the life of the valve. Available in either PTFE or Grafoil

Standard Specification

Pressure: 6000psi	Packing: PTFE	Handle: T-Bar	Bore: 0.21" (5.4mm)
Temp: 240 deg C	Thread form: NPT	Seat: Metal to metal	CV: 0.46

Ordering Code

(Typical example) → **M** **50** **S** / **BT** / **AT**

Type

Male x Female

Size

25 - 1/4" 75 - 3/4"
38 - 3/8" 10 - 1"
50 - 1/2"

Material

S - 316S31 Stainless Steel M - Monel (400) (Others available)
C - 230M07 Carbon Steel HC - Hastalloy (C276)

Optional Connections (NPT Standard)

BT - BSP Taper
BP - BSP Parallel (top sealing)
SW - Male Socket Weld
BW-SCH*** - Butt weld Schedule ***

Options

AG - Grafoil
AT - Anti-Tamper
HL - Handle Locking
HL-PI - Handle Locking + Position Indicator
HP - 10000 psi
HW - Hand Wheel
LT100 - Cryogenic Head Unit (-100°C)

LT200 - Cryogenic Head Unit (-200°C)
MT - Metering Tip
MTG - Mounting Holes x 2
NA - NACE MR-01-75 (latest revision)
OXY - Oxygen Cleaned
PK - PEEK Soft Tip (not available oxygen cleaned)
PM - Panel Mount